

ASHCROFT®

In the world of compact operating systems, microcomputer chips, miniature pneumatics and general equipment downsizing, Ashcroft® instruments are keeping up with the times.

The Ashcroft MiniGauge™ is designed for those applications where space is a limiting factor. At 23mm, the compact MiniGauge is smaller than 1" in diameter and available in 60 psi through 300 psi ranges. Taking into consideration the small size of the MiniGauge, the dial face was designed for maximum readability. This product is offered in

1/8 NPT back connection with 15 mm (9/16") wrench flats for easy installation.

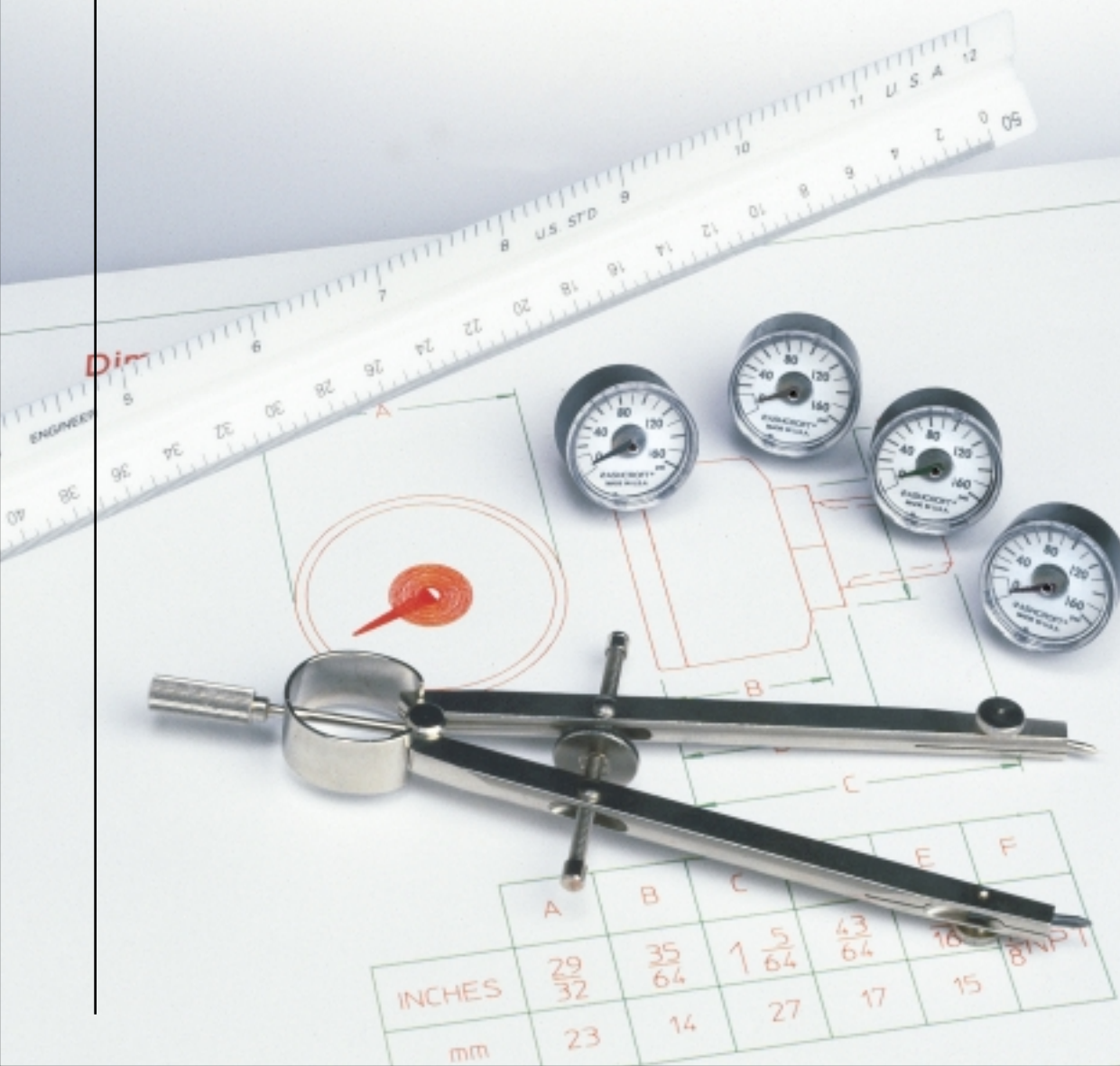
The versatile Ashcroft MiniGauge surpasses the demands of durability in two important ways: first, by using direct drive reading, the spiral tube transmits motion directly to the pointer – no gears or movement parts to wear out; and second, the case material is an ABS blend that is both enduring and attractive.

The Ashcroft MiniGauge is ideal for a multitude of applications where a 1 1/2" conventional size gauge is too large.

Ashcroft MiniGauge™

Commonly used on . . .

- *Mini FRLs*
- *Pneumatic stack valves*
- *Air compressors and accessories*
- *Medical/dental equipment*
- *A variety of other applications*



ISO 9001
REGISTERED FIRM

DRESSER INSTRUMENT

A Halliburton Company

BULLETIN CMG-1

Product Specifications

Ashcroft

Model Number: 23DDG

Size: 23mm (.906")

Case: Black, ABS blend

Ring: None

Window: Polycarbonate, ultra-sonically welded to case

Dial: Black figures on white background, aluminum

Pointer: Brass, painted black

Bourdon Tube: Beryllium copper, spiral; soft soldered to socket

Movement: None (direct drive reading)

Socket: Brass with 15mm (5/8") wrench flats

Connection: 1/8" NPT back

Ranges:

Range (psi)	Dial Arc	
	180°	235°
0/60	●	
0/100	●	
0/160		●
0/200		●
0/300		●

Repeatability: Better than 1%

Accuracy: ±5% full scale

Operating

Temperature: -40°F to 150°F

Packaging: Bulk pack; individually sealed in 2 mil polybags

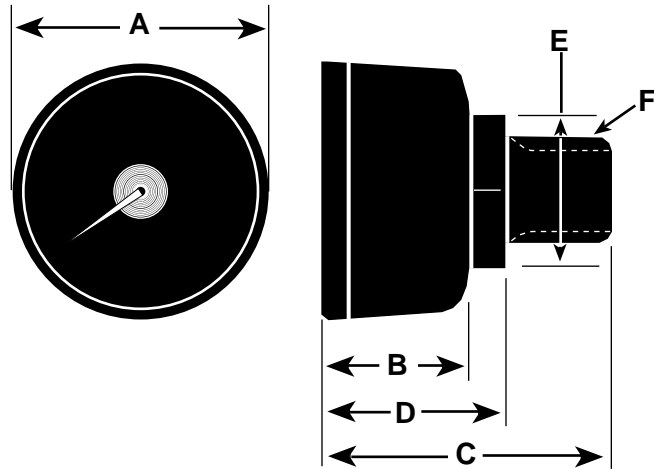
OPTIONAL FEATURES

Socket: Throttle plugs; 1/32" threads; PT 1/8 (JIS) and R 1/8 (BSPT) threads

Dial: Customized

Dampening: Silicone-dampened coil for vibration applications

Dimensions



	A	B	C	D	E	F
Inches	0.90	0.55	1.07	0.67	0.56	1/8
(mm)	(23)	(14)	(27)	(17)	(15)	NPT

Ordering Information

23 DDG 01B 60#

Gauge Size: 23mm (0.906" or 29/32")

Gauge Type: Direct Drive Gauge

Connection Size/Location: 1/8 NPT Back

Range: 0/60 psi

U.S. Headquarters

Berea, Kentucky

Harrison Road
Berea, KY 40403
Tel: (606) 986-9333
Fax: 1-800-28 BERA
(1-800-282-3732)

International Headquarters

Stratford, Connecticut

250 E. Main Street
Stratford, CT 06614-5145
Tel: (203) 378-8281
Fax: (203) 385-0499

U.S. Sales Offices

Chicago, Illinois

400 W. Lake Street
Suite 318
Roselle, IL 60172-3573
Tel: (630) 980-9030
Fax: (630) 980-9440

Houston, Texas

3838 North Sam Houston
Parkway East
Suite 120
Houston, TX 77032
Tel: (281) 590-1092
Fax: (281) 590-7100

Los Angeles, California

3931 MacArthur Blvd.
Suite 202
Newport Beach, CA 92660
Tel: (949) 852-8948
Fax: (949) 852-8971

Hartford, Connecticut

1501 East Main Street
Meriden, CT 06450-2860
Tel: (203) 235-0450
Fax: (203) 235-0593

Mobile, Alabama

851 South Beltline Hwy.
Suite 402, 4th Floor
Mobile, AL 36606
Tel: (334) 473-1692
Fax: (334) 473-1782

visit our web site at
www.dresser.com/instruments